

DMX6FireUSB

Scope of delivery

Start by making sure that the contents of the package are complete.

The DMX 6Fire USB package should contain the following items:

- 1 DMX 6Fire USB (the hardware)
- 1 network adapter
- 1 adapter (6.3 mm -> 3.5 mm, stereo)
- 1 adapter (6.3 mm -> 3.5 mm, mono)
- 1 USB cable (1.8 m)
- 1 installation CD (with detailed manual)
- 1 Quick Start Guide
- 1 customer service card
- 1 registration card with the serial number

Windows installation—step by step

Please follow the steps in the same exact order they appear here. Do not connect the DMX 6Fire USB to the computer until the point specified in the installation.



Which operating system?

The DMX 6Fire USB can be used with Windows XP (Service Pack 2) and Windows Vista only. Older Windows versions are not supported. Please ensure that you have applied the current service packs and updates to your Windows installation.

Power supply

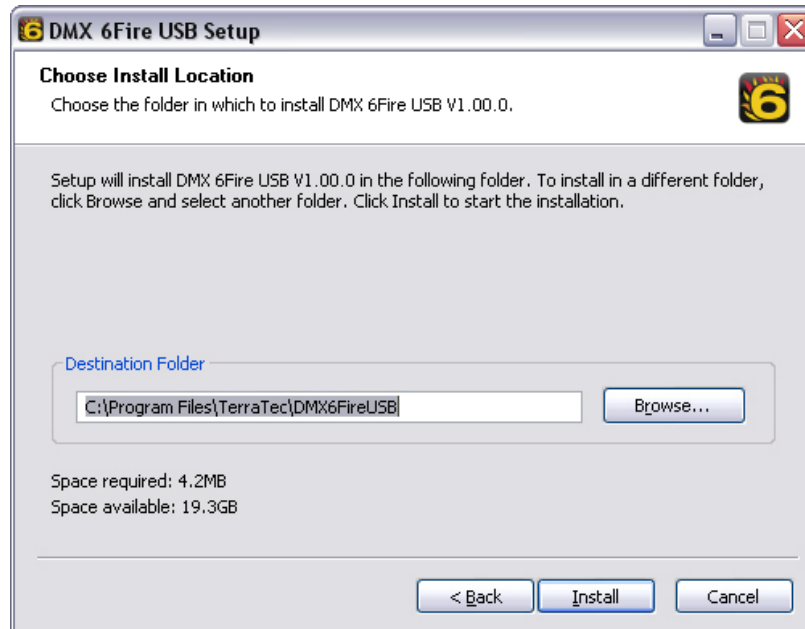
The DMX 6Fire USB is not bus-powered and thus cannot be used without a power adapter. Power supply via USB cable is feasible only for smaller USB devices; more complex systems like the DMX 6Fire USB require a separate power connection. Moreover, a power adapter provides much "cleaner" power than a USB port, which has a noticeable effect on sound quality. Therefore, connect the 6Fire to the power adapter provided.

Installing the DMX 6Fire USB driver in Windows XP

1. Before you start, ensure that your Windows XP version is up to date. Right-click the "My Computer" icon and choose "Properties" from the context menu. If you still have the default "Teletubbyland" desktop background image for XP, the following path will take you to the information you need: Start -> Settings -> Control Panel -> System. It is important for Windows XP Service Pack 2 (SP2 for short) or Windows Vista to be installed on your computer. If this is not the case, please contact Microsoft (www.microsoft.com) to update your system. For Windows, this is generally free of charge.
2. After you insert the installation CD provided, the AutoStart program starts automatically. If AutoStart does not open, start it manually by double-clicking "Autorun.exe" in the CD's root directory. The "Installation" button in AutoStart installs the DMX 6Fire USB driver and the Control Panel in your operating system.
3. The installation wizard will now display its welcome message.



- The default destination for the installation is specified in the following window. If you prefer another folder, select "Browse..." and choose the corresponding directory. Then, click "Install".



- You can disregard the following safety warning without concern. Click "Continue Anyway" to continue.



- The driver is now installed in the system, and as soon as the message below appears, you can connect the DMX 6Fire USB to your computer's USB 2.0 port using the cable provided. Windows XP will automatically recognise the device as new hardware and open the driver installation dialogue.



- The Windows "Found New Hardware Wizard" asks what driver to use for the new hardware component. You do not have to search for the driver online. The next window asks about the driver for the DMX 6Fire USB hardware. Next, select "Install the software automatically [Recommended]" and confirm with "Next".



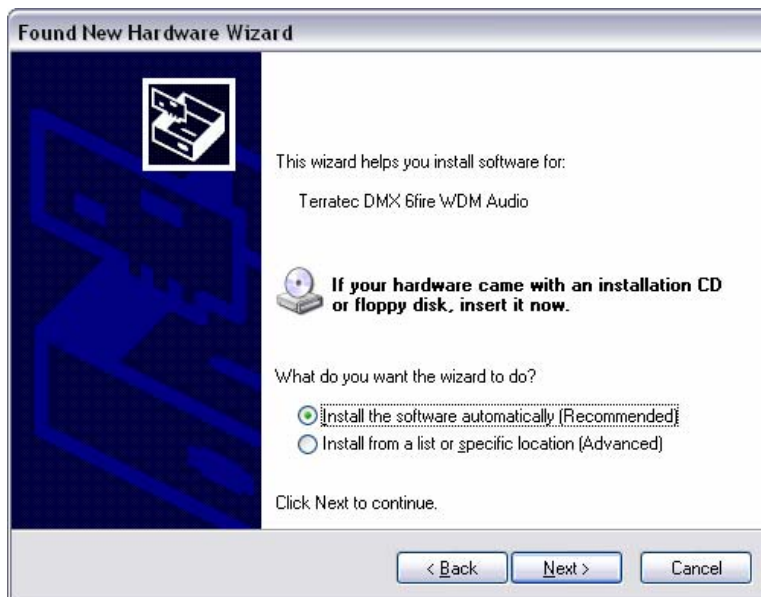
- Then, just to be safe, a new system restore point is set. Nothing to be concerned about—this is a standard precaution.



9. This concludes part 1 of the installation, so click "Finish".



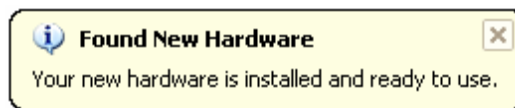
- This returns you to the installation wizard, as only the drivers for the USB controller have been installed; now, the drivers that make the controller a USB audio device are installed. Here, too, select "Install the software automatically" to install the second batch of drivers.



- Again, you can safely ignore the message that the software did not pass the "Windows Logo test".



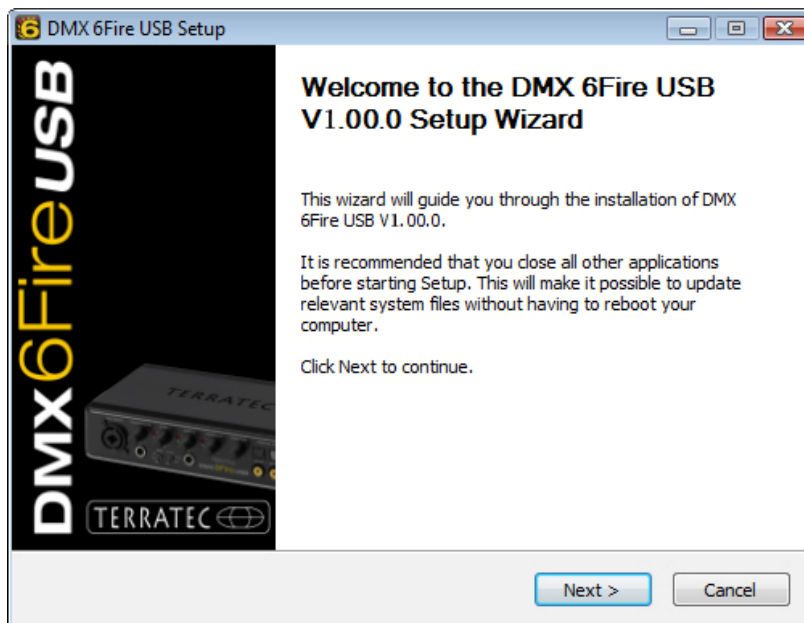
12. Click "Finish" to complete the installation of the drivers.



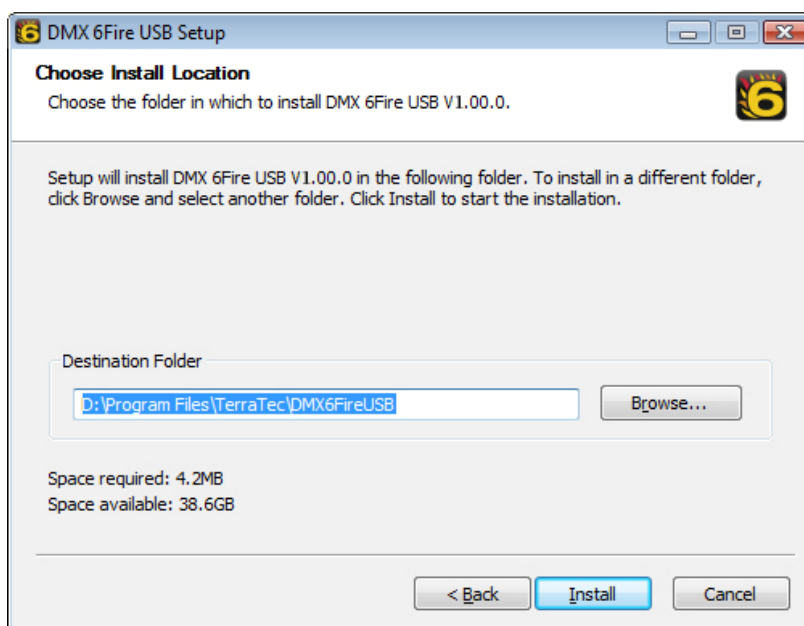
Installing the DMX 6Fire USB driver in Windows Vista

1. After you insert the installation CD provided, the AutoStart program starts automatically. If AutoStart does not open, start it manually by double-clicking "**Auto-run.exe**" in the CD's root directory. The "Software Installation" button in AutoStart installs the DMX 6Fire USB driver and the Control Panel in your operating system.

2. The installation wizard will now display its welcome message.



3. The default destination for the installation is specified in the following window. If you prefer another folder, select "Browse..." and choose the corresponding directory. Then, click "Install".



4. The driver is now installed in the system, and as soon as the message below appears, you can connect the DMX 6Fire USB to your computer's USB 2.0 port using the cable provided. Windows Vista will automatically recognise the device as new hardware.